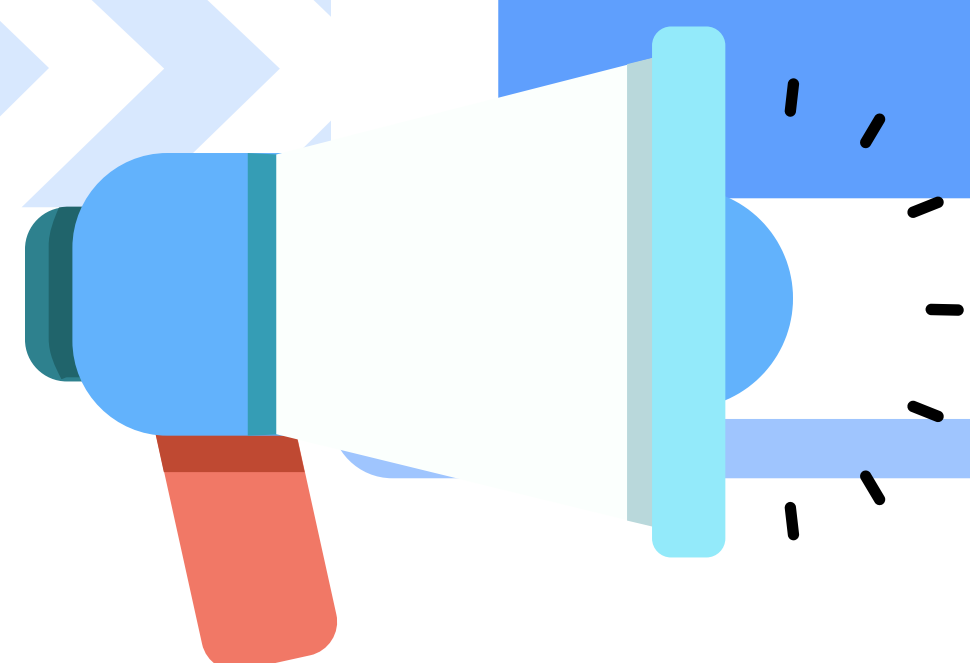


# Milford Public Library

## Annual Report



2018

### Highlights

- 1 Circulation of 11.24 items per capita (State Average for similar sized libraries is 6.3)
- 2 Program attendance of 8,193 higher than State Average for similar sized libraries (7,917)
- 3 Third year of collaboration with community partners on summer long event series "Stories 'n More"
- 4 Two AWE Afterschool Edge learning machines added to Youth Department
- 5 Newsletter re-established and will be mailed out quarterly to all residents
- 6 Continued outreach to schools, preschools, assisted living facilities, and community events

### Future Endeavors

In Fall 2018, the Library announced that Sunday hours would resume in January 2019. The Library will be open on Sundays, 1pm-5pm except for June-August.

Also beginning January 2019, the Library will no longer charge overdue fines! Replacement costs for lost items will remain.

Turn  
page over  
for the  
numbers



# The Numbers!



176,875 Checkouts



21,498 Reference Questions Asked and Answered



125,609 Visits to the Library



901 New Library cards issued



8,193 People attended 296 programs



Almost 11,000 computer sessions were logged, including wireless usage



Meeting rooms booked 270 times



80,828 items in the collection

Milford Public Library

330 Family Drive  
Milford, MI 48381  
248-684-0845  
[www.milfordlibrary.info](http://www.milfordlibrary.info)